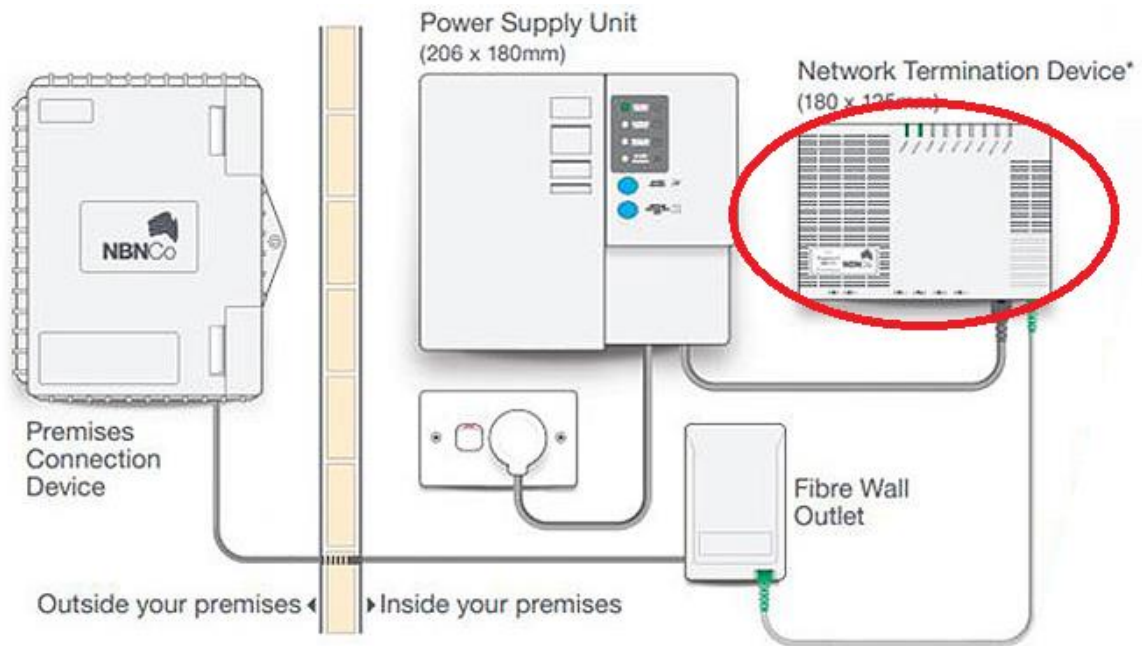
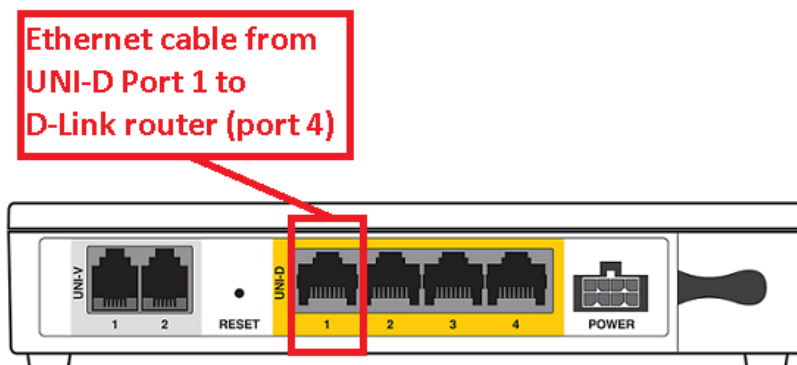


## D-Link DSL-2750b set up guide for NBN

1. Locate the NBN **Network Termination Device** inside your home/business.

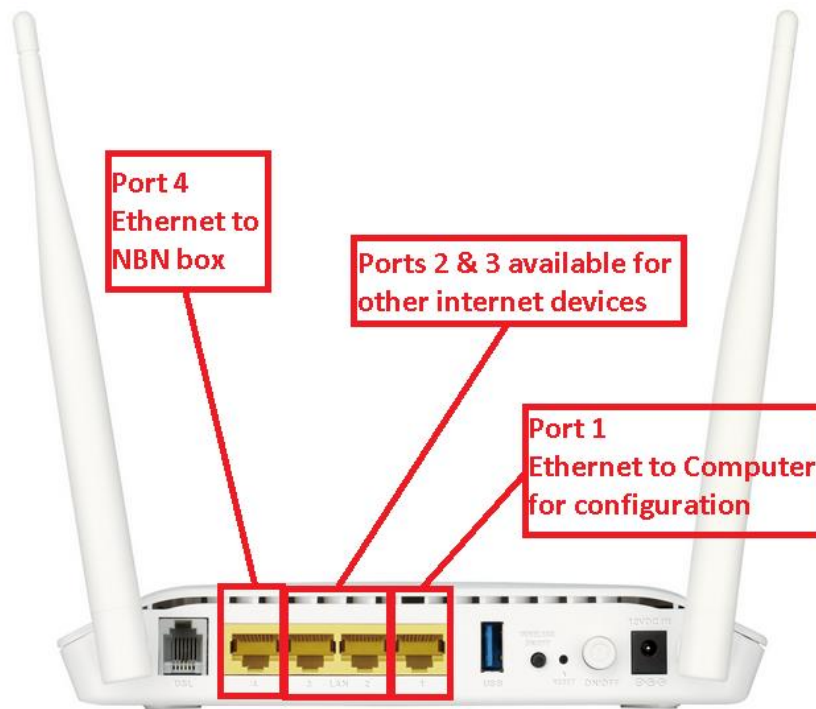


2. At the bottom of the Network Termination Device plug an Ethernet cable into **UNI-D Port 1**.

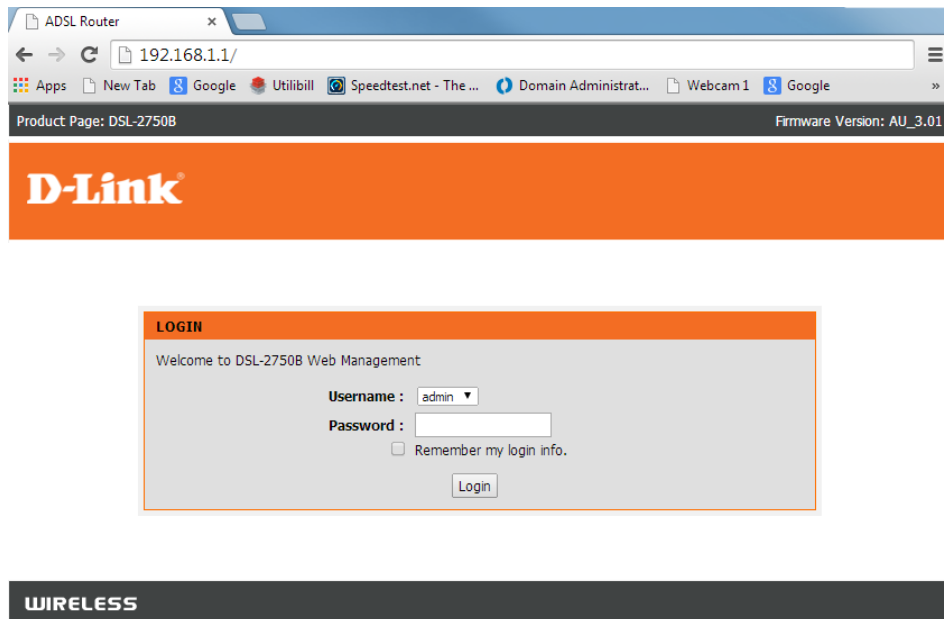


Please note: If you already have an NBN delivered using UNI-D port 1, our NBN service will be delivered in the next UNI-D port.

3. Plug the power cable into the D-Link router and then plug the cable coming from the Network Termination Device into **Port 4** of the supplied D-Link router.



4. Plug an Ethernet cable into **Port 1** of the D-Link router. This should then plug into your computer or laptop.
5. Turn on your computer and open a web browser.  
In the address bar go to: **192.168.1.1**



6. Enter the default username and click **LOGIN**.  
Username: **admin**  
Password: **admin**

## 7. Click on Setup Wizard

Product Page: DSL-2750B [Site Map](#) Firmware Version: AU\_3.01

**D-Link**

DSL-2750B // **SETUP** ADVANCED MAINTENANCE STATUS HELP

Wizard

Internet Setup

Wireless Connection

Local Network

IPv6 Local Network

Time and Date

Logout

**SETTING UP YOUR INTERNET**

There are two ways to set up your Internet connection. You can use the Web-based Internet Connection Setup Wizard or you can manually configure the connection.

Please make sure you have your ISP's connection settings first if you choose manual setup.

**INTERNET CONNECTION WIZARD**

You can use this wizard for assistance and quick connection of your new D-Link Router to the Internet. You will be presented with step-by-step instructions in order to get your Internet connection up and running. Click the button below to begin.

**Note:** Before launching the wizard, please ensure you have correctly followed the steps outlined in the Quick Installation Guide included with the router.

**Helpful Hints...**

First time users are recommended to run the **Setup Wizard**. Click the **Setup Wizard** button and you will be guided step by step through the process of setting up your ADSL connection.

If you consider yourself an advanced user or have configured a router before, click **Setup > Internet Setup** to input all the settings manually.

[More...](#)

## 8. Click Next

Product Page: DSL-2750B [Site Map](#) Firmware Version: AU\_3.01

**D-Link**

**WELCOME TO D-LINK SETUP WIZARD**

This wizard will guide you through a step-by-step process to configure your new D-Link router and connect to the Internet.

- **Step 1:** Change Device Login Password
- **Step 2:** Set Time and Date
- **Step 3:** Setup Internet Connection
- **Step 4:** Configure Wireless Network
- **Step 5:** Completed and Apply

**WIRELESS**

## 9. At Step 1 – Click Skip

Product Page: DSL-2750B [Site Map](#) Firmware Version: AU\_3.01

**D-Link**

**STEP 1: CHANGE DEVICE LOGIN PASSWORD** > 2 > 3 > 4 > 5

To help secure your network, D-Link recommends that you should choose a new password. If you do not wish to choose a new password now, just click "Skip" to continue. Click "Next" to proceed to next step.

Current Password :

New Password :

Confirm Password :

**WIRELESS**

## 10. At Step 2 – Click **Next**

Product Page: DSL-2750B Site Map Firmware Version: AU\_3.01

---

**D-Link**

1 > **STEP 2: SET TIME AND DATE** > 3 > 4 > 5

The Time Configuration option allows you to configure, update, and maintain the correct time on the internal system clock. From this section you can set the time zone that you are in and set the NTP (Network Time Protocol) Server. Daylight Saving can also be configured to automatically adjust the time when needed.

**TIME SETTINGS**

Automatically synchronize with Internet time servers

First NTP time server :

Second NTP time server :

**TIME CONFIGURATION**

Current Router Time : Thu Jan 1 00:05:39 1970

Time Zone :

Daylight Saving Time rule of US have automatically been applied to this time zone

Enable Daylight Saving, overwrite automatic rule

	Month	Week	Day	Time
Daylight Saving Dates : Start	<input type="text" value="Jan"/>	<input type="text" value="1st"/>	<input type="text" value="Sun"/>	<input type="text" value="12 am"/>
End	<input type="text" value="Jan"/>	<input type="text" value="1st"/>	<input type="text" value="Sun"/>	<input type="text" value="12 am"/>

## 11. At STEP 3 – Select: **WAN Services type: ETH WAN**

Then select: **Protocol – PPPoE**

Product Page: DSL-2750B Site Map Firmware Version: AU\_3.01

---

**D-Link**

1 > 2 > **STEP 3: SETUP INTERNET CONNECTION** > 4 > 5

Please select your Country and ISP (Internet Service Provider) from the list below. If your Country or ISP is not in the list, please select "Others".

If you want to change WAN services type, Please select ETH or DSL

WAN Services type:  **ETH WAN**  DSL

Protocol :

- Dynamic IP
- Static IP
- PPPoE**
- Bridge

**PPPoE**

Please enter your Username and Password as provided by your ISP (Internet Service Provider). Please enter the information exactly as shown taking note of upper and lower cases. Click "Next" to continue.

Username :

Password :

Confirm Password :

12. Enter your [Australia Telcom](#) NBN Username and Password and click **NEXT**.  
Username format is always XXXXXXXXXXXX@wba.telconbn.com.au

Product Page: DSL-2750B Site Map Firmware Version: AU\_3.01

**D-Link**

1 > 2 > **STEP 3: SETUP INTERNET CONNECTION** > 4 > 5

Please select your Country and ISP (Internet Service Provider) from the list below. If your Country or ISP is not in the list, please select "Others".

If you want to change WAN services type, Please select ETH or DSL

WAN Services type:  **ETH WAN**  DSL

Protocol:

**PPPoE**

Please enter your Username and Password as provided by your ISP (Internet Service Provider). Please enter the information exactly as shown taking note of upper and lower cases. Click "Next" to continue.

00009876543210@wba.telconbn.com.au Username:

00009876543210 Password:

Confirm Password:

Back **Next** Cancel

13. Set up your Wifi and click **NEXT**.  
Change your Wireless Network name to a name of your choice.  
Set your WPA2 Pre-Shared Wifi Key. We recommend: a1b2c3d4e5

Product Page: DSL-2750B Site Map Firmware Version: AU\_3.01

**D-Link**

1 > 2 > 3 > **STEP 4: CONFIGURE WIRELESS NETWORK** > 5

Your wireless network is enabled by default. You can simply uncheck it to disable it and click "Next" to skip configuration of wireless network.

**Enable Your Wireless Network**

Your wireless network needs a name so it can be easily recognized by wireless clients. For security purposes, it is highly recommended to change the pre-configured network name.

Wireless Network Name (SSID):  1~32 characters

Select "Visible" to publish your wireless network and SSID can be found by wireless clients, or select "Invisible" to hide your wireless network so that users need to manually enter SSID in order to connect to your wireless network.

Visibility Status:  Visible  Invisible

In order to protect your network from hackers and unauthorized users, it is highly recommended you choose one of the following wireless network security settings.

None	Security Level	Best
<input type="radio"/> None	<input type="radio"/> WEP	<input type="radio"/> WPA-PSK
<input checked="" type="radio"/> <b>WPA2-PSK</b>		

**Security Mode: WPA2-PSK**  
Select this option if your wireless adapters support WPA2-PSK.

Now, please enter your wireless security key.

**WPA2 Pre-Shared Key:**   
(8-63 characters, such as a~z, A~Z, or 0~9, i.e. "%Fortress123&")

**Note:** You will need to enter the same key here into your wireless clients in order to enable proper wireless connection.

Back **Next** Cancel

14. Click **APPLY**.

Product Page: DSL-2750B [Site Map](#) Firmware Version: AU\_3.01

**D-Link**

1 > 2 > 3 > 4 **STEP 5: COMPLETED AND APPLY**

Setup complete. Click "Back" to review or modify settings. Click "Apply" to apply current settings.

If your Internet connection does not work after apply, you can try the Setup Wizard again with alternative settings or use Manual Setup instead if you have your Internet connection details as provided by your ISP.

**SETUP SUMMARY**

Below is a detailed summary of your settings. Please print this page out, or write the information on a piece of paper, so you can configure the correct settings on your wireless client adapters.

<b>Time Settings :</b>	Disable
<b>ETH Port:</b>	eth4
<b>Protocol :</b>	PPPoE
<b>Username :</b>	000093331932@wba.telconbn.com.au
<b>Password :</b>	000093331932
<b>Wireless Network :</b>	Enabled
<b>Wireless Network Name (SSID) :</b>	Customer Name
<b>Visibility Status :</b>	Visible
<b>Encryption :</b>	WPA2-PSK/AES (also known as WPA2 Personal)
<b>Pre-Shared Key :</b>	a1b2c3d4e5

15. Congratulations – you should now be online with [Australia Telcom](#) and the NBN.

16. If you have any difficulties or to find out your username and password please call our support team on [1300132310](#)